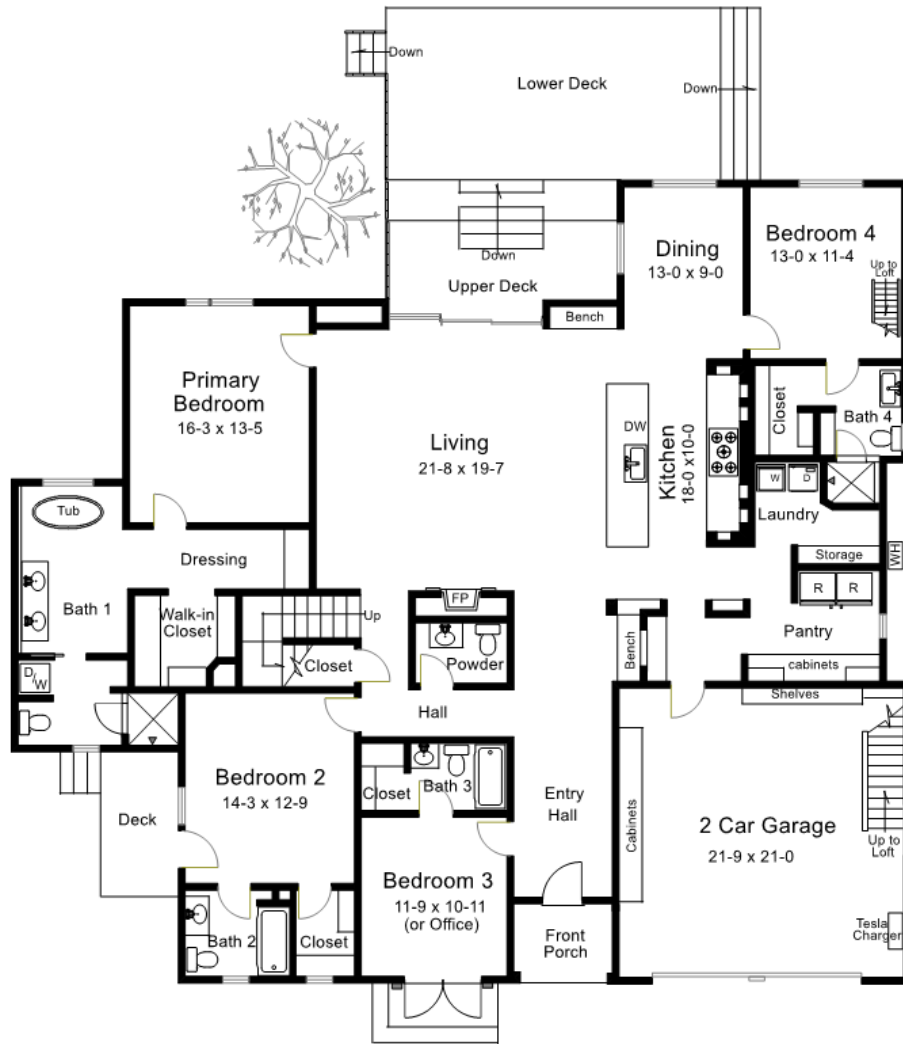
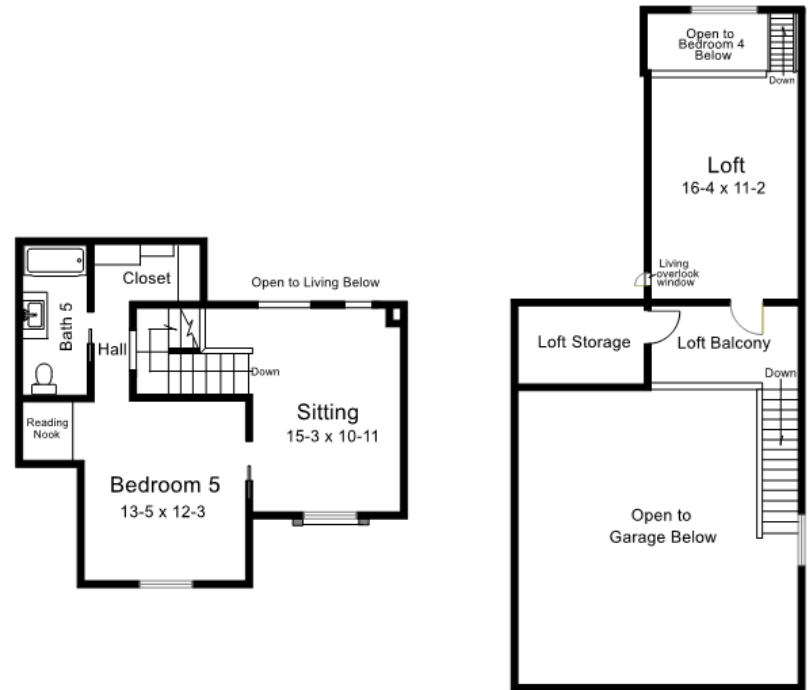


2884 Lasauen Road, Pebble Beach



FIRST FLOOR

First Floor: 2800 sq. ft.
 Second Floor: 575 sq. ft.
 Bedroom 4 Loft: 214 sq. ft.
 Total Livable Area: 3589 sq. ft.
 Garage: 498 sq. ft.
 Loft Storage & Balcony: 146 sq. ft.



SECOND FLOOR AND LOFTS